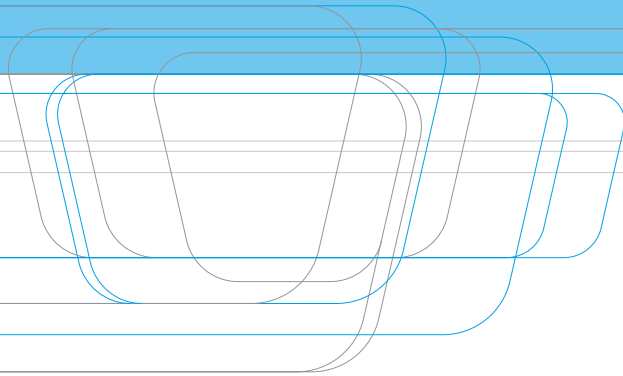
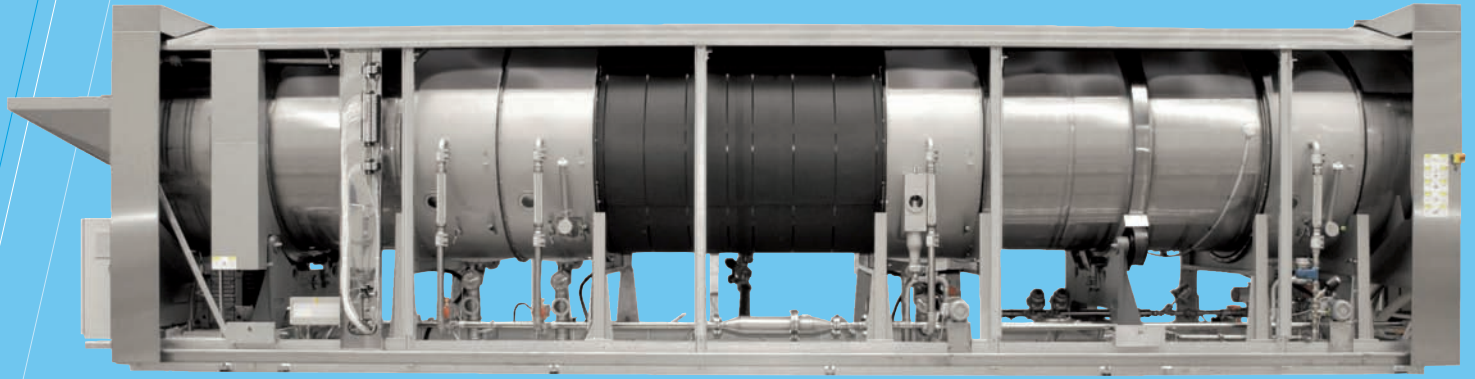




# Senking Continuous Batch Washer Universal SL

The flexible Continuous Batch Washer for processing  
linen at the highest hygiene level.

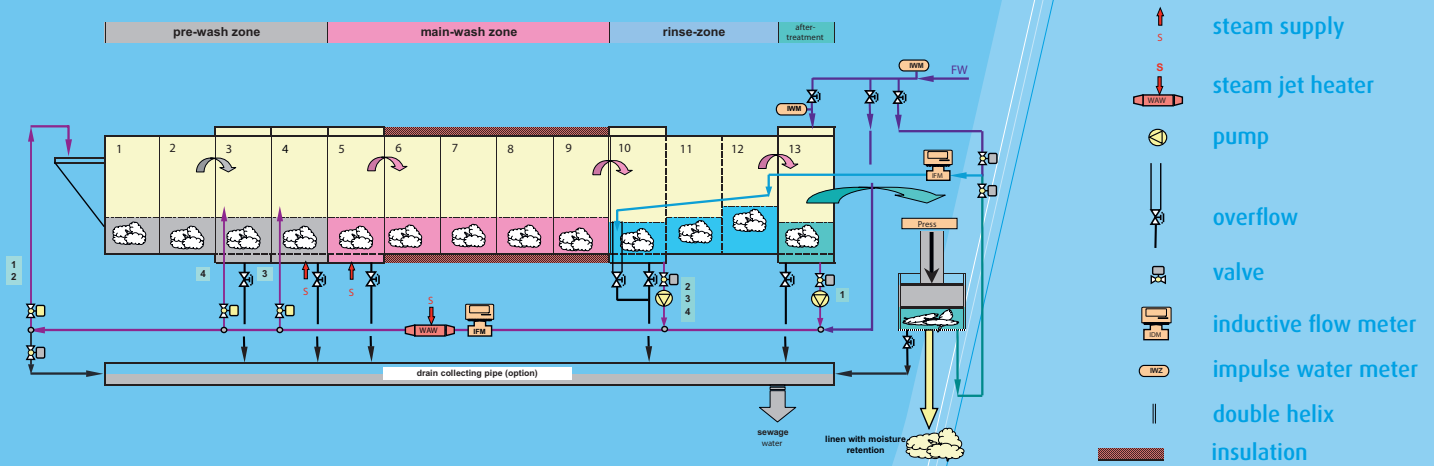




# Senking Continuous Batch Washer Universal SL

After the successful introduction of the innovative UNIVERSAL continuous batch washer, JENSEN sets further standards in washing technology in the industrial laundry: The new continuous batch washer UNIVERSAL SL (reg. pat.).

This tunnel washer offers optimal hygienic standards with very low use of water and energy. The UNIVERSAL SL has been developed in response to the increasing hygienic requirements especially in the area of textile products for hospitals and nursing homes. The innovative process works without recovery tanks and thanks to that, in connection with a SENKING water extraction press, the machine becomes a hygienically unique system. Furthermore, the maintenance effort for the UNIVERSAL SL is significantly lower, as e.g. regular and often difficult cleaning of tanks and filters is no longer necessary.



- 1 colder rinse water for comp. 1
- 2 warm rinse water for comp. 1
- 3 warm rinse water for second bath exchange
- 4 warm rinse water for first bath exchange

### Wash process

The proven bath exchange technique with standing baths in the pre- and main wash zone was adopted from the UNIVERSAL batch washer and is an important condition for high flexibility and low operational costs. Different kinds of linen may be washed one after the other in this process. The unique feature of the UNIVERSAL SL is the water management process. By means of a specially adapted technique it is possible to recycle water internally in the machine without the use of recovery tanks. The central pipe work is rinsed and cleaned automatically, e.g. when a colour change of the linen is done. All water flows are precisely metered and controlled by inductive flow meters.

The advantage is that the machine operates in a completely «closed» process, which avoids splash water or expelled moisture.

### Consumption characteristics

It is one of the special qualities of this unique continuous batch washer that low consumption figures are achieved without the need of buffer tanks.

Due to the specially designed recovery system with separate reuse of water from the first rinse compartment and the after-treatment zone, the machine offers more specific recovery possibilities than a traditionally one with tanks would.

A mixing of different process waters, as it is often the case in machines with tanks is avoided with the UNIVERSAL SL. In that way, liquor with different properties (detergent concentration, colour, temperature etc.) can be recovered in the wash process even more systematically, due to which the recovery rate of wash liquor increases and the fresh water usage decreases accordingly.

The complete re-use of rinse and press water is a standard feature of the UNIVERSAL SL.

To achieve this aim, the press and the continuous batch washer have been connected so that the press water is fed directly into the rinse zone by a pipeline.

Without the recovery tanks, heat losses can even be more reduced.

### Design of the drum

The heart of the UNIVERSAL SL is its drum, with a (patented) eccentric Archimedian helix that makes the fullest possible use of the drum volume and thus produces a highly efficient washing action while securely transporting the linen batch. This unique design, plus the fact that the helix is fully welded to the inner drum throughout (with no vertical bulkheads), gives the drum an extraordinary degree of strength and stability. The UNIVERSAL SL therefore does not need any oversized drum plates, with their comparatively high weight and consequently greater consump-



Drum bearings



Toothed chain drive with automatic lubrication system



Lint removal boxes on double drums (option)

tion of drive power. The eccentric design of the helix makes far better use of the drum volume than it is the case in other machines with drums of similar diameter and depth. Deep beaters ensure that the linen and process water are thoroughly mixed together and the outstanding washing action is made even more efficient by the washboard-like profile of the helix.

The drum is driven by a frequency-controlled gear motor and an extremely robust and durable toothed chain. The design of drive has proved reliable a thousand times over under the most severe conditions.

The frequency-controlled drive is very smooth-running and protects all the drive components. An automatic electronically monitored system ensures that the is always perfectly lubricated. Specially designed drain valves on the double drums ensure that solid matter is always removed from the

compartment. Generously designed rapid drain outlets with ball valves that open up the entire opening ensure that draining times are very short, bath exchange is efficient and there is no risk of lint accumulating. The specially designed washing beaters assist rapid bath exchange and the efficient transport of the linen batch. All the drain valves also have clamp fixtures for ease of maintenance and can be opened without tools for inspection purposes. Specially designed steam nozzles are ideally adapted to the drum geometry. Their position on the bottom of the double drums means that the steam very rapidly enters the process water and ensures very short heating stages even when cycle times are very short.

For heating up the process water for the pre-wash (e.g. when supplying colder fresh water in case of a colour change), there is a steam jet heater in the central water pipe of the machine.

To adapt to different types of linen, and to optimise media consumption even further, the UNIVERSAL SL can be fitted with the following options from our range:

- Integral «Spiraliser» heat exchanger to preheat fresh water
- Additional lint filter combined with especially designed overflow boxes on the double drums
- SENKING-AutoFilter (fully automatically controlled disc-filter with regeneration function intergated in the washing tunnel, with stainless steel housing; as this is a «closed» filter system it is especially suitable for the UNIVERSAL SL
- SENKING-cascade lint filter
- automatically controlled cool-down





The water temperature can be controlled by a steam jet heater.



Drain valve with quick-release fixture and sight glass

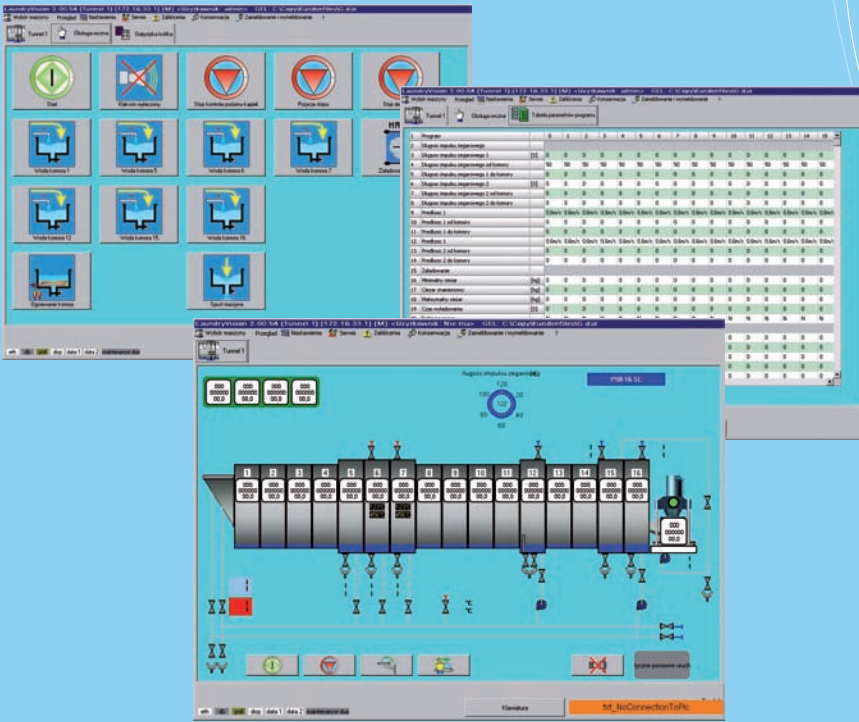
### Modular control design using an industrial PC

The recently developed machine control provides the user with a convenient operating interface, together with a high degree of efficiency and safety. Operation is displayed and controlled from an industrial PC with a touch screen. The Interbus design of the modular control enables the entire group of machines to be networked together so that every machine in a full washing line can be viewed and operated from every industrial PC. With conventional controllers, if one operator terminal fails it usually affects the whole system and causes a stoppage. The new control system has the unique advantage that the washing system can then continue

to operate from another PC in the network, thus providing secure operation and avoiding a production failure. If, even so, a programming error or data loss occurs, the settings that have been previously saved on a flash card can quickly and easily be restored. Naturally the whole washroom system can be maintained remotely by JENSEN customer service via an Ethernet interface. The new control system offers you the following advantages:

- The whole of the washing process is displayed in real time
- Individual configuration of up to 100 washing programs
- The highest possible standard of security

- Allocation of individual access rights for up to 40 users provide a high degree of protection against programming errors or misuse
- Uniform control hardware on all plant components
- Factory customer service performs remote servicing of the whole system via Ethernet
- Convenience of operation thanks to the Windows-based display and the same tabular structure on the individual machines
- Quick and simple data backup on modern storage media
- Clear production statistics
- Detailed maintenance program offering the ability to generate a maintenance schedule for individual periods of time in the future.



## Installation

JENSEN is pleased to assist you in planning your laundry providing excellent consulting, layouts and technical data. Authorized JENSEN distributors or JENSEN engineers should carry out the installation to ensure the correct performance.

## Service

In addition JENSEN provides an extraordinary after sales service through a worldwide network of highly qualified Sales and Service Centers and distributors, all with their own maintenance and spare parts services.

## Call us...

JENSEN provides a complete range of heavy-duty equipment for the laundry industry, delivered and installed according to your specifications. Please do not hesitate to contact us for further advice and information, or visit [www.jensen-group.com](http://www.jensen-group.com)

[www.jensen-group.com](http://www.jensen-group.com)